








**wolf**seal

 Sealing products

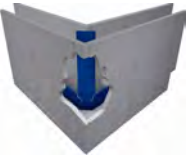
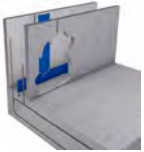
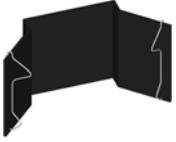
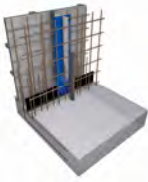





The new Generation of sealing-products

## Product Overview

	Product	Application	Delivery Size
	<b>wolfseal KB 16</b>	<b>wolfseal KB 16.7</b> can be installed in construction joints of all types in concrete units up to 20 m water columns.	100 RM Box + 50 joint clips
	<b>wolfseal KB 8</b>	<b>wolfseal-KB 8</b> is conceived for sealing construction joints in wall/ceiling connections.	100 RM Box + 50 joint clips
	<b>wolfseal expansion joint connection</b>	Clamping arrangements to bond <b>wolfseal</b> elements with expansion joint bands of all types.	2 pcs. cardboard box
	<b>wolfseal retaining clip</b>	Wolfseal elements can either be securely fixed to the upper reinforcement layer or to the rising reinforcement.	25 pcs. Bag.
	<b>wolfseal cross clip</b>	With this clip are all the T-joints and cross points in <b>wolfseal</b> joint system are secure.	25 pcs. Bag.
	<b>wolfseal waterproof Formwork brace</b>	Suitable for quick, accurate and secure clamping of formwork systems in-situ concrete construction.	100 pcs. card box WT 24 WT 25 WT 30 WT 40
	<b>wolfseal Formwork brace/vario</b>	Suitable for quick and secure sealing of wall spacers of all current formwork systems with variable wall thicknesses up to 50 cm in in-situ concrete construction.	100 pcs. card box + closing plugs

## Product Overview

	Product	Application	Delivery size
	<b>wolfseal-FTS Straight</b>	Butt joints between prefabricated elements in the Wolf System are treated and sealed like crack-inducing points.	Range per 62,5 Meter  WD 24/30 WD 35/40
	<b>wolfseal-FTS Corner</b>	Butt joints between prefabricated elements in the Wolf System are treated and sealed like crack-inducing points.	Range per 62,5 Meter  WD 24/30 WD 35/40
	<b>wolfseal-KB Corner</b>	Connecting FTS with <b>wolfseal</b> KB	4 pcs. card box
	<b>wolfseal-OBS WD 24/25</b>	The <b>wolfseal</b> failure inducing element consists of a joint element with the proven <b>wolfseal</b> special coating as well as legs of galvanised steel plate which separates the concrete sections and therefore causes the fracture of the reinforced concrete wall.	Range per 62,5 Meter  WD 24/25 WD 30
	<b>wolfseal-Sealing Tape</b>	It consists in a PVC joint band with special <b>wolfseal</b> bond coating on both sides	Role à 15 m Width 38 mm
	<b>wolfseal-Service Pipe</b>	The centrally attached water barrier is additionally sealed with a <b>wolfseal</b> coating, there by achieving guaranteed double safety against water permeability.	1 pcs. card box DN 100 DN 125 DN 150 WD 24 - 50 on stock
	<b>wolfseal KG Floor Drains</b>	The use of the <b>wolfseal</b> floor drain allows areas, which are created in impermeable reinforced concrete ("White Tanks" watertight concrete construction) to be drained.	1 pcs. card box  DN 100 DN 125 DN 150

## wolfseal KB 16

### The product

**wolfseal KB 16.7** consists of individual elements completely covered on both sides with a split protective paper.

By means of the connection with the fresh concrete, the **wolfseal** special bond coating assures water impermeability with only 3 cm embedment depth.

The single elements are 2 m long, 16.7 cm high and 1.2 mm thick in a 100 RM packing unit including securing clips.

### The Area of Application

**wolfseal KB 16.7** can be used in all horizontal or vertical construction joints under or not under water

**wolfseal KB 16.7** is resistant to all organic waste waters and is therefore perfectly suited for use in for example water treatment works.

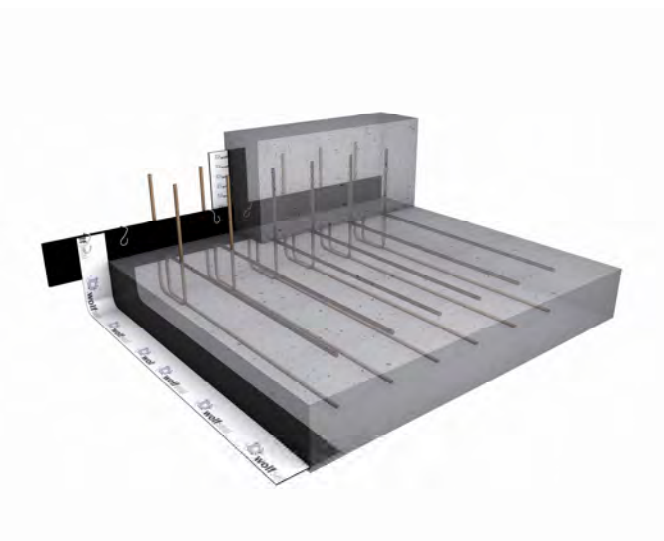


### The Advantages

- fast and secure sealing of all construction joints without complicated concrete upstands
- simple and fast installation of the 2 m long elements even before concreting
- simple and secure connection of the single elements or the cross points by pressing together the **wolfseal** special bond coating
- **wolfseal** special bond coating is resistant to all organic waste waters
- suitable for processing with many other **wolfseal** sealing products

### The Installation

**wolfseal KB 16.7** are centrally installed on the upper reinforcement after removing the protective paper before concreting. The single elements are bonded by pressing together a 5 cm overlap and secured with the provided securing clips. The fixation is achieved by means of the available retaining clips one piece each running meter. The elements are centrally fixed between the bent portion in wall/wall and floor/floor joints. Cross points are secured with the provided **wolfseal** cross clips.



## wolfseal KB 8



### The Product

**wolfseal KB 8** consists of individual elements completely covered on both sides with a split protective paper.

By means of the connection with the fresh concrete, the **wolfseal** special bond coating assures water impermeability with only 3 cm embedment depth.

The single elements are 2 m long, 8 cm high and 1.2 mm thick in a 100 RM packing unit including securing clips.

### The Area of Application

**wolfseal KB 8** was developed for sealing Wall/Ceiling horizontal joints under or not under water pressure. A special and complicated reinforcement configuration is not necessary because of the small embedment depth in both concrete constructions units.

**wolfseal KB 8** is resistant to all organic waste waters and is therefore perfectly suited for use in for example water treatment works.

### The Advantages

- fast and secure sealing of Wall/Ceiling joints without complicated concrete up-stands
- simple and fast installation of the 2 m long elements
- **wolfseal** special bond coating is resistant to all organic waste waters
- suitable for processing with many other **wolfseal** sealing products

### The Installation

The installation is carried out through insertion in the fresh concrete or fixation in the wall upper edge and secured with the help of the **wolfseal** retaining clips before wall concreting. The elements are bonded by pressing the coated ends together.



## wolfseal expansion joint connection

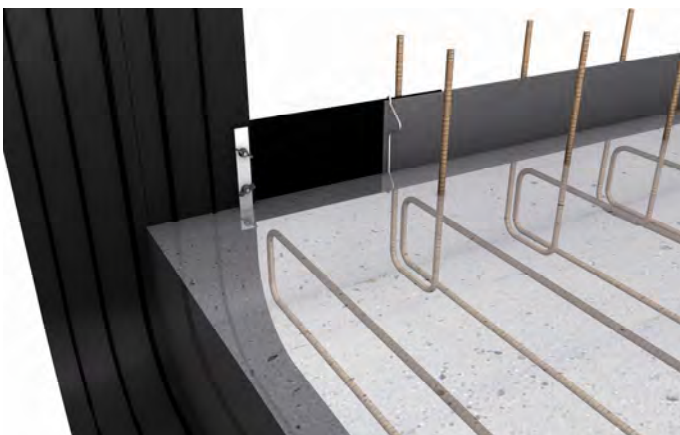
### The Product

The **wolfseal** expansion joint connection consists of a clamping arrangement to bond **wolfseal** elements with expansion joint bands of all types.

The end of the **wolfseal** element is bonded with the expansion joint connection by means of a threaded clamping arrangement and fixed to the expansion joint band.

### The Area of Application

Fast and secure sealing of the cross points in construction and expansion joints of concrete construction units.



### The Advantages

- simple and fast connection of **wolfseal** elements to expansion joints of all types
- no welding or vulcanizing work on the expansion joint band is needed
- installation height can be flexibly determined on site

### The Installation

The **wolfseal** expansion joint connection is placed at the desired position of the expansion joint band. The holes are done from the water exposed side with a hole punch and screw together with the expansion joint band.

The **wolfseal** elements can be attached to the wolf expansion joint connections by simply pressing them together.

## wolfseal waterproof formwork brace

### The Product

The **wolfseal waterproof formwork-brace** consists of an approx. 22 mm internal diameter PVC tube with integrated water ties and water stops.

Additionally, the **wolfseal waterproof formwork-brace** is provided with the proven **wolfseal** special bond coating for watertight bonding between tie points and concrete.

Following wall thicknesses are available as a standard:

WT 24, 25, 30 and 40

### The Area of Application

Secure and quick sealing of tie points of all current formwork systems in in-situ concrete construction.



### The Advantages

- water proof tested tube in impact direction up to 5 bar
- additional compound effect reliability through **wolfseal** special bond coating between tube and concrete
- sealable immediately after the dismantling of the formwork
- installation and seal independent from weather conditions
- formwork-brace firm position steady distance spacer for accurate wall thickness

### The Installation

The **wolfseal waterproof formwork-brace** is pushed on the tie rods between the internal and external formwork to warrant an accurate formwork distance while tensioning.

After the dismantling of the formwork, provided sealing compound is hammered 3 to 4 cm on both sides and closed also on both sides with the as well provided covering cups.

## wolfseal waterproof formwork-brace/vario

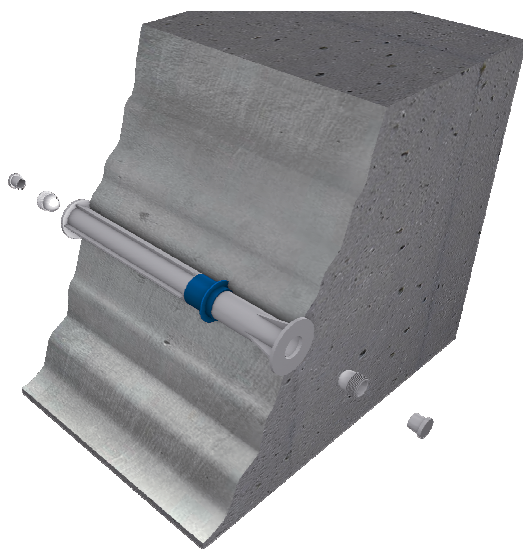
### The Product

The **wolfseal waterproof formwork-brace Vario** completes the **wolfseal** sealing products in cast-in-place wall area. **wolfseal waterproof formwork-brace Vario** can be installed in all wall thicknesses up to 50 cm.

The **wolfseal waterproof formwork-brace Vario** consists of two pieces and can be shortened to the desired wall thickness. The package includes the two-piece **wolfseal waterproof formwork-brace Vario** and their corresponding sealing compounds and covering cups.

### The Area of Application

Fast and secure tie rod sealing for all current formwork systems and variable wall thicknesses up to 50 cm in cast-in-place concrete walls.



### The Advantages

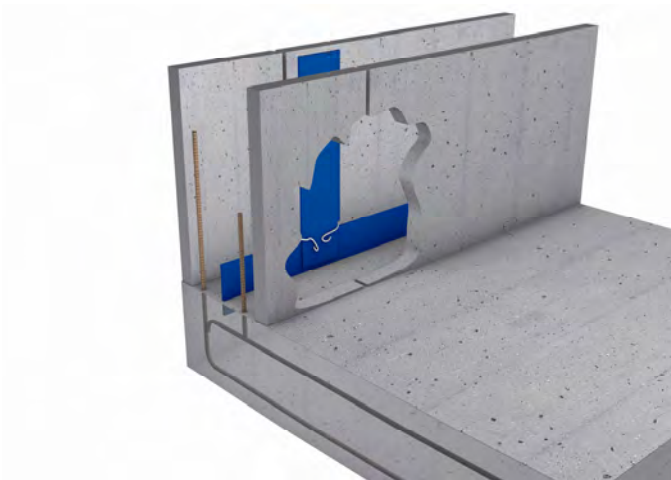
- continuously sealing of all tie points up to 50 cm
- water proof tested tube in impact direction up to 5 bar
- additional compound effect reliability through **wolfseal** special bond coating between tube and concrete
- sealable immediately after the dismantling of the formwork
- installation and sealing independent from weather conditions
- formwork-brace firm position steady distance spacer for accurate wall thickness

### The Installation

The **waterproof formwork-brace Vario** is pushed on the tie rods after the cut between the internal and external formwork to warrant an accurate formwork distance while tensioning. During this process, there is to pay attention to place the piece provided with the **OBJ** special bond coating facing the water exposure side. After the dismantling of the formwork, provided sealing compounds are hammered 3 to 4 cm on both sides and closed also on both sides with the as well provided covering cups.



## wolfseal FTS Straigt und FTS Corner - for element walls



### The Product

Butt joints between prefabricated elements in the Wolf System are treated and sealed like crack-inducing points.

**wolfseal** crack-inducing elements are applied here.

We differentiate two types of crack-inducing elements: FTS Straight and FTS Corner.

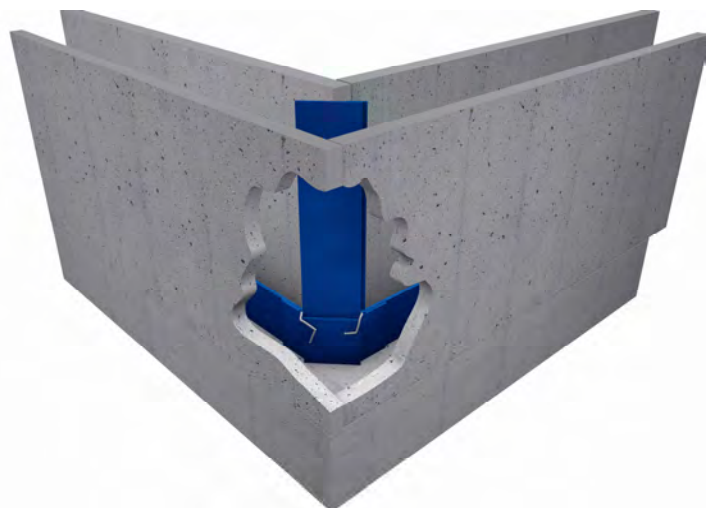
### Assembly procedure

Determine the assembly direction of the prefabricated elements.

While positioning the first wall unit, both front ends of the **wolfseal** crack-inducing elements are affixed to the prefabricated unit and adhered to the base plate **wolfseal** KB-Element.

According to the assembly directions, a **wolfseal** FTS-Element is affixed on each free end of each next placed pre-cast unit and professionally adhered to the base plate KB-Element.

The last wall unit is carefully brought in and assembled vertically between the already with crack-inducing element provided wall units.



### The product

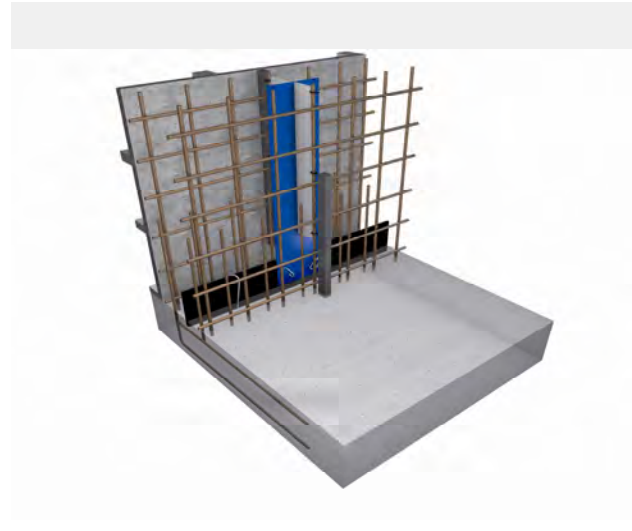
The **wolfseal** failure inducing element consists of a joint element with the proven **wolfseal** special coating as well as legs of galvanised steel plate which separates the concrete sections and therefore causes the fracture of the reinforced concrete wall.

The elements are produced in standard lengths of 250 cm. The **wolfseal** joint element is 16.7 cm wide and 1.2 mm thick. The fracture legs can be supplied for all wall thicknesses. The elements are delivered ready for installation on site.

### The Application

The **wolfseal** fracture inducing elements are used to create a planned crack in reinforced concrete walls.

The ensuing crack is simultaneously sealed water tight by the sealing element. In „White Tanks“ (water tight concrete construction) for example can be concreted in 10 m long sections without any problems, shrinkage cracks are no longer arise uncontrolled, but arise at the points at which they were expected and are subsequently sealed according to plan.



### The advantages

- Quick and simple installation of the element by tie wire it to the reinforcement
- Reliable creation of shrinkage cracks due to the almost complete separation of the concrete crosssection
- Continuous elastic seal against water by means of the bond between the **wolfseal** element and the fresh concrete.
- Watertight up to a water head of 30 m.
- The **wolfseal** coating is resistant against all organic waste water.
- Simply and secure connection of the elements to each other, as well as between the **wolfseal** wall / floor or wall / ceiling seals (**wolfseal** KB, VB, SF, Products)
- Building block system (Length 250 cm)

### The Product

It consists in a PVC joint band with special **wolfseal** bond coating on both sides. In contact with fresh concrete, **wolfseal Sealing Tape** bonds homogeneously with the hard concrete during hardening process. The installation depth is 3 cm in the floor plate as well as 10 cm in the wall to warrant a joint impermeability up to 30 m water columns.

**wolfseal KS 13** is available as a 25 RM roll with 13 cm width. The split protective paper on both sides is removed just before concreting.

### The Area of Application

**wolfseal KS 13** can be used to water proof sealing of all types of joints up to a 30 m water columns.



### Advantages

- easy handling due to little weight
- pressurized water proof through proven **wolfseal** bond coating
- suitable for sealing all types of construction joints
- fast and easy handling
- combinable with all **wolfseal** system products

### The Installation

Normally, the installation of **wolfseal** Sealing Tape takes place by pressing it 3 cm deep in the fresh concrete. At the same time, the lower protective paper is removed and the joints are stuck together 5 cm overlap. The installation is also possible before concreting on the upper reinforcement and fixed with retaining clips. To form the corners the **wolfseal Sealing Tape** are bent during installation to the required size.

## wolfseal Service Pipe

### The Product

wolfseal service pipes are available in quality HT, KG, SML or Loro X.

The centrally attached water barrier is additionally sealed with a wolfseal coating, thereby achieving guaranteed double safety against water permeability.

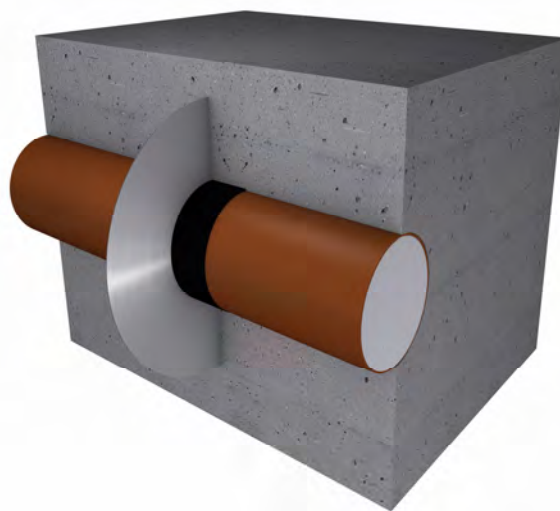
Pipegrade (HT, KG) DN mm(100, 125, 150, 200)

Other lengths and diameters on request

### Application

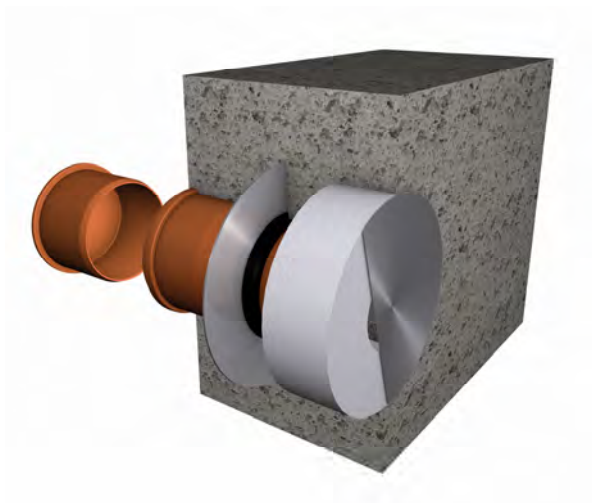
wolfseal lining pipes are used wherever absolutely water-tight wall lead-throughs are needed. The wolfseal lining pipes can be used without any problems in poured in-place concrete walls, double element walls and double element walls with internal insulation.

wolfseal lining pipes are also used as spacer pipes for gas, telephone and other lines. The wolfseal lining pipes consist of KG pipes with a centrally positioned water barrier, and they are also fitted with a wolfseal



### Advantages

- Hydrostatic seal
- Problem free installation
- Cover against dirt ingress in the pipe
- Double security against water penetration by means of a central water stop and wolfseal sealing band
- Suitable for all wall thicknesses and all standard nominal widths are available
- Very economical as standard seal inlay can be used.



## wolfseal Floor Drains

### The Product

The **wolfseal** Floor drains are delivered in different variations. All technical requirements can be allowed for:

Pipe connections (Number, vertical / horizontal, Diameter, pipe type)

Caps or connections

Covers (ABS, cast, stainless steel)

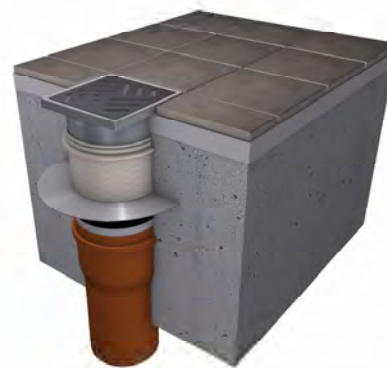
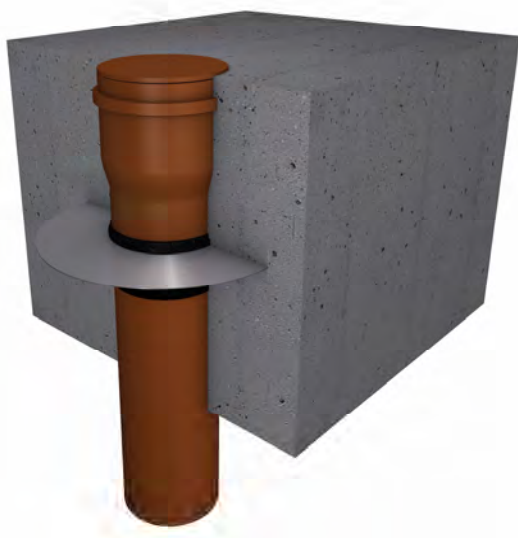
Odour seal

Back up (valve, pump)

Load class 300 kg / 1,5 t / 12,5 t

Sump

Due to the variety an exact description is necessary when ordering. Standard types are in stock.



### Application

The use of the **wolfseal** floor drain allows areas, which are created in impermeable reinforced concrete ("White Tanks" watertight concrete construction) to be drained.

The penetration of the slabs is safely achieved using **wolfseal** drain. Cellar floors can be drained by means of the ground dewatering. The requirement to be "impermeable" of the white tubs is fulfilled by using the **wolfseal** sealing band combined with the extra protection of the water break. In this way a double protection against water seepage is guaranteed.

### Advantages

- Hydrostatic seal
- Problem free installation
- Cover to protect against clogging of the drain
- Double security against water seepage by means of a centrally located waterbreak and **wolfseal** sealing band
- All technical requirement can be fulfilled

**wolf**seal



## Roland Wolf GmbH

Großes Wert 21  
D-89155 Erbach

Tel. +49 (0) 7305.96 22 - 0  
Fax. +49 (0) 7305.96 22 - 22

[info@wolfseal.de](mailto:info@wolfseal.de)  
[www.wolfseal.de](http://www.wolfseal.de)

## Subsidiary Bodensee

Benzstraße 11  
D-88094 Neuhaus

Tel. +49 (0) 7546.92 92-0  
Fax. +49 (0) 7546.92 92-10